

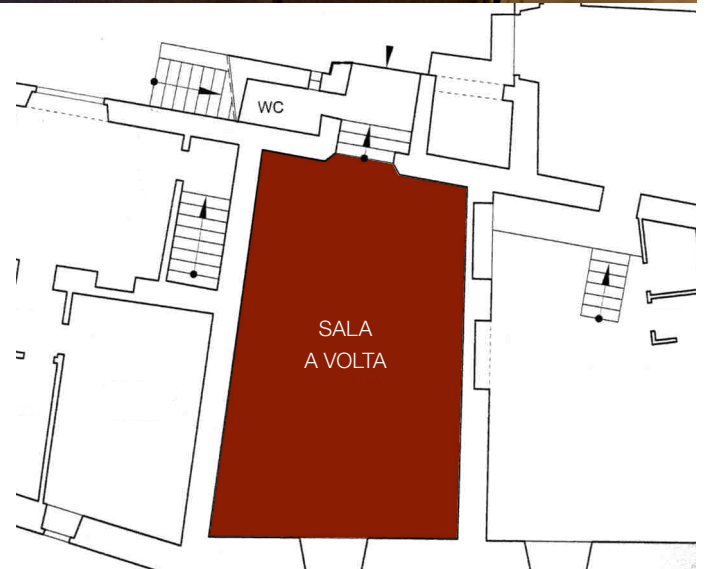


The “Sala a Volta”

Multi-use space for study
or professional use, or receptions.
Ideally suited as a concert venue.

Dimension

Surface area: 57 m² (5.90 m × 9.80 m)
Ceiling height (lowest point): 2.00 m
Ceiling height (highest point): 4.00 m
Max capacity: 60/70 seats, in theatre layout



Features

TRADITIONAL SPACE, WITH VAULTED BRICK CEILING
POLISHED CONCRETE FLOORING COLOURED WITH NATURAL PIGMENTS
GLAZED DOOR LEADING DIRECTLY TO THE COURTYARD
WINDOW WITH BLIND
WALLS PLASTERED TO A HEIGHT OF 1.7 M
COMBINATION OF DIRECT AND INDIRECT LIGHTING
1 BATHROOM

Furnishings

FLEXIBLE OPTIONS

Seating layouts

THEATRE-STYLE WITH PROJECTOR – MAX 60/70 SEATS
CLASSROOM-STYLE – MAX 30/35 SEATS
U-SHAPE – MAX 30 SEATS
OPEN FLOOR WITH ROOM FOR EXERCISE ACTIVITIES/HANDS-ON
INSTRUCTIONAL COURSES ETC. – MAX 25/30 PARTICIPANTS

Facilities

ISDN PHONE LINE
SET UP FOR VIDEO CONFERENCING
CLOSED CIRCUIT TELEVISION
INDEPENDENTLY ADJUSTABLE HEATING
WE FIND THAT, THANKS TO THE PLEASANT CLIMATIC CONDITIONS,
AIR CONDITIONING IS NOT REQUIRED IN THIS VENUE

Standard technical equipment available

ELECTRICAL GENERATOR
PA SYSTEM WITH RECORDING FUNCTION – ON REQUEST
OVERHEAD PROJECTOR – ON REQUEST
CAROUSEL SIDE PROJECTOR – ON REQUEST
FREE-STANDING SCREEN
LASER POINTER

Coffee and refreshments

AVAILABLE CONTINUOUSLY OR AT PREDETERMINED TIMES